



# Teaching School Hubs: Briefing Paper on Religious Education

For attention of Directors of Teaching School Hubs and their teams



The Ofsted Education Inspection Framework maintains that a key factor in assessing how effectively a curriculum is taught and assessed is:

Teachers have expert knowledge of the subjects that they teach. If they do not, they are supported to address gaps in their knowledge so that pupils are not disadvantaged by ineffective teaching.

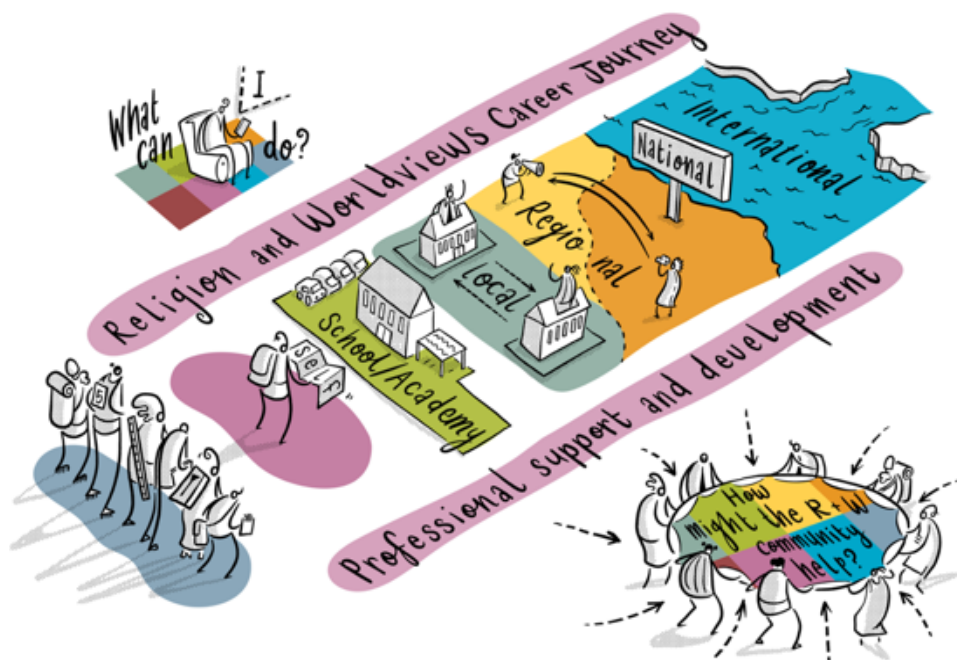
*(Quality of Education, paragraph 208)*

The **Ofsted Research Review** (2021) for Religious education (RE) says the subject should be taught by teachers who have secure subject and curriculum knowledge who foster pupils' interest in the subject and who are equipped to address pupils' misunderstandings. It notes that generic approaches to professional development can be unhelpful for RE because of the complexities involved in the subject. Ofsted identifies the variability in teacher training, particularly in the primary phase, as a challenge for all educationalists.

The Commission on RE (2018) recommended that "there should be a minimum of 12 hours of contact time for **Religion and Worldviews** for all forms of primary ITE including School Direct and other school-based routes".

Alongside this, the **RE Council of England and Wales**, including one of its member bodies the **National Association of Teachers of RE (NATRE)**, is calling for a **National Plan for Religious Education** and promoting a shift towards a religion and worldviews approach to knowledge and pedagogy.

This short briefing paper sets out some of the ways in which the RE (religion and worldviews) community can support **Teaching School Hubs**. This includes providing subject specific knowledge of policy about the subject, content knowledge, pedagogical knowledge and opportunities for teachers to engage with educational theory and research. This is not an exhaustive list. There will be additional specialist providers of support in some local and regional areas.



Focus Area	How the Religion and Worldviews Community can help and support your work	Useful Links
<p><b>CPD</b></p>	<p><b>All teachers:</b></p> <ul style="list-style-type: none"> <li>• Membership of NATRE</li> <li>• NATRE affiliated local groups and regular subject briefings from key organisations</li> <li>• CSTG Masters Scholarship</li> <li>• Farmington Scholarships</li> <li>• #REChatUK</li> <li>• Strictly RE Conference (hosted by NATRE)</li> <li>• Paid for courses provided by specialist external providers such as: <ul style="list-style-type: none"> <li>– RE Today Services, local authorities RE advisers, Dioceses</li> <li>– CSTG Online E-Learning Courses</li> </ul> </li> </ul> <p><b>Middle and Senior Leaders:</b></p> <ul style="list-style-type: none"> <li>• Get to know your local SACRE</li> <li>• Receive confidential advice on subject-specific issues through NATRE</li> <li>• For primary subject leads look out for the new subject leader toolkit</li> <li>• CSTG Leadership Programme</li> <li>• CSTG CTeach Programme</li> <li>• NATRE news pages</li> <li>• Secondary subject leads University links</li> <li>• Local RE Groups</li> </ul>	<p><a href="https://natre.org.uk/membership/membership">natre.org.uk/membership/membership</a></p> <p><a href="https://cstg.org.uk/grants/individual/masters-scholarship">cstg.org.uk/grants/individual/masters-scholarship</a></p> <p><a href="https://natre.org.uk/courses-events/strictlyRE-2023/">natre.org.uk/courses-events/strictlyRE-2023/</a></p> <p><a href="https://natre.org.uk/courses-events/upcoming-courses-events">natre.org.uk/courses-events/upcoming-courses-events</a></p> <p><a href="https://natre.org.uk/courses-events/SubjectKnowledgeWebinars22-23">natre.org.uk/courses-events/SubjectKnowledgeWebinars22-23</a></p> <p><a href="https://farmington.ac.uk/index.php/farmington-scholarships">farmington.ac.uk/index.php/farmington-scholarships</a></p> <p><a href="https://courses.cstg.org.uk">courses.cstg.org.uk</a></p> <p><a href="https://nasacre.org.uk/database">nasacre.org.uk/database</a></p> <p><a href="https://reonline.org.uk/leadership/leadership-programme">reonline.org.uk/leadership/leadership-programme</a></p> <p><a href="https://reqm.org">reqm.org</a></p> <p><a href="https://natre.org.uk/news/latest-news/">natre.org.uk/news/latest-news/</a></p> <p><a href="https://natre.org.uk/secondary/making-links-with-universities">natre.org.uk/secondary/making-links-with-universities</a></p> <p><a href="https://natre.org.uk/secondary/religious-education-at-ks4">natre.org.uk/secondary/religious-education-at-ks4</a></p> <p><a href="https://natre.org.uk/about-natre/re-in-your-region">natre.org.uk/about-natre/re-in-your-region</a></p>
<p><b>ITT</b></p>	<p><b>For beginning teachers:</b></p> <ul style="list-style-type: none"> <li>• Free E-Learning Courses for Primary</li> <li>• Free E-Learning courses for Secondary</li> </ul> <p><b>For mentors:</b></p> <ul style="list-style-type: none"> <li>• Free support materials for ITT mentors</li> <li>• Support for secondary mentors through Expert Mentor Programme with AULRE</li> </ul>	<p><a href="https://courses.cstg.org.uk">courses.cstg.org.uk</a></p> <p><a href="https://reonline.org.uk/professional-development/for-initial-teacher-training-providers">reonline.org.uk/professional-development/for-initial-teacher-training-providers</a></p> <p><a href="https://reonline.org.uk/professional-development/re-mentor-programme">reonline.org.uk/professional-development/re-mentor-programme</a></p>



<b>Early Career Framework</b>	<p><b>For early career teachers:</b></p> <ul style="list-style-type: none"> <li>• Early Career Teacher programme through NATRE – including monthly webinar</li> <li>• Free self-study courses for primary and secondary teachers</li> </ul> <p><b>For mentors:</b></p> <p>See CPD referenced above</p>	<p><a href="https://natre.org.uk/membership/early-careers-teacher">natre.org.uk/membership/early-careers-teacher</a></p> <p><a href="https://natre.org.uk/membership/early-careers-teacher/ect-free-monthly-webinar">natre.org.uk/membership/early-careers-teacher/ect-free-monthly-webinar</a></p> <p><a href="https://reonline.org.uk/professional-development">reonline.org.uk/professional-development</a></p>
<b>Appropriate Body Services</b>	<ul style="list-style-type: none"> <li>• Receive newsletters from NATRE, REONLINE and RE Council to ensure you are up to date with latest national developments in the subject</li> <li>• Utilise local networks (see above) for support</li> </ul>	<p><a href="https://natre.org.uk">natre.org.uk</a></p> <p><a href="https://reonline.org.uk">reonline.org.uk</a></p> <p><a href="https://religiouseducationcouncil.org.uk">religiouseducationcouncil.org.uk</a></p> <p><a href="https://natre.org.uk/courses-events/strictlyRE-2023">natre.org.uk/courses-events/strictlyRE-2023</a></p>
<b>Research Schools within Teaching School Hubs</b>	<ul style="list-style-type: none"> <li>• CSTG Research Programme</li> <li>• Research and data from NATRE</li> <li>• Links to TRS-UK</li> <li>• Farmington Fellowships</li> <li>• Opportunities to bid for individual and corporate grants</li> </ul>	<p><a href="https://reonline.org.uk/research">reonline.org.uk/research</a></p> <p><a href="https://natre.org.uk/resources/?Search=research&amp;Search-Type=and&amp;ResourceIDs%5B%5D=3&amp;NoDefaultFilter=">natre.org.uk/resources/?Search=research&amp;Search-Type=and&amp;ResourceIDs%5B%5D=3&amp;NoDefaultFilter=</a></p> <p><a href="https://trs.ac.uk">trs.ac.uk</a></p> <p><a href="https://cstg.org.uk">cstg.org.uk</a></p>
<b>National Professional Qualifications (NPQ)</b>	<ul style="list-style-type: none"> <li>• See CPD section above for support for NPQs in Leading Behaviour and Culture, Leading Teaching, Leading Teacher Development</li> <li>• Senior Leadership, Headship and Executive Leadership</li> </ul>	See above

This briefing paper has been produced jointly by:  
**The National Association of Teachers of RE,**  
**The Religious Education Council of England and Wales** and **RE Today Services**. Their work is supported by **Culham St Gabriel's Trust**.

Find more professional development opportunities from across the RE community:  
[reonline.org.uk/professional-development/be-inspired](https://reonline.org.uk/professional-development/be-inspired)

