

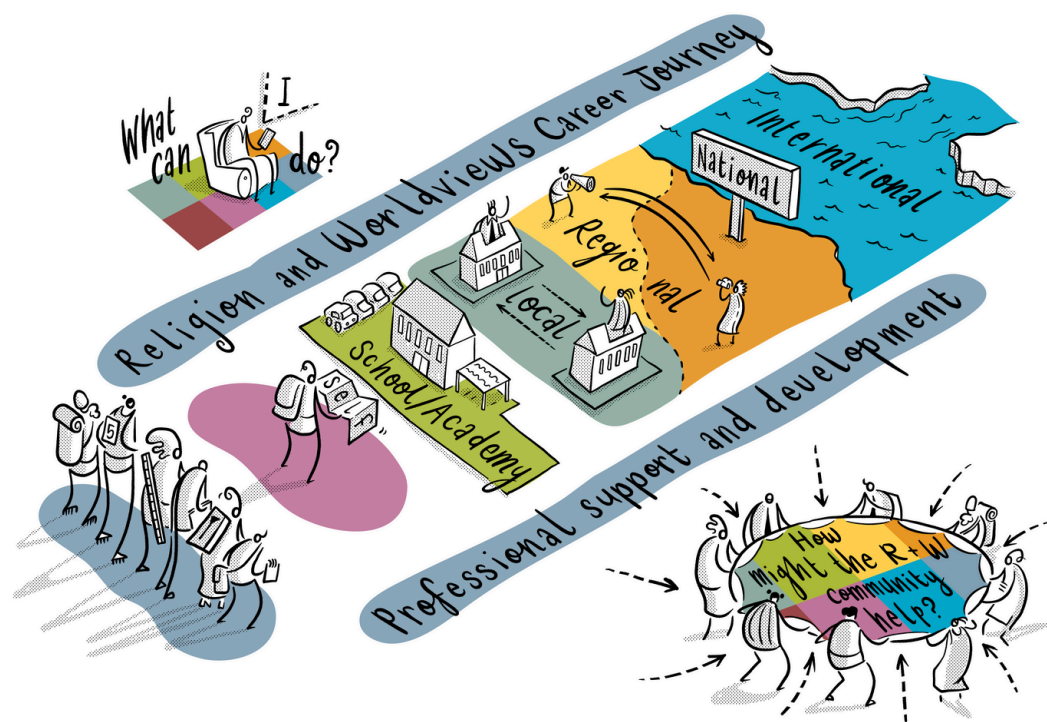


# TEACHING SCHOOL HUBS: BRIEFING PAPER ON RELIGIOUS EDUCATION

FOR ATTENTION OF DIRECTORS OF TEACHING  
SCHOOL HUBS AND THEIR TEAMS

**The National Content Standard for Religious Education in England** was published by the Religious Education Council of England and Wales in 2023. This sets out a benchmark for the subject in terms of standards expected in relation to content. This standard should be considered within the wider context of the call for a National Plan for the subject. Both the standard and the National Plan align with the Ofsted Research Review (2021) by saying the subject should be taught by teachers who have secure subject and curriculum knowledge who foster pupils' interest in the subject and who are equipped to address pupils' misunderstandings. Ofsted notes that generic approaches to professional development can be unhelpful for RE because of the complexities involved in the subject. Ofsted identifies the variability in teacher training, particularly in the primary phase, as a challenge for all educationalists.

This short briefing paper sets out some of the ways in which the RE (religion and worldviews) community can support Teaching School Hubs. This includes providing subject specific knowledge of policy about the subject, content knowledge, pedagogical knowledge and opportunities for teachers to engage with educational theory and research. This is not an exhaustive list. There will be additional specialist providers of support in some local and regional areas.





FOCUS AREA	HOW THE RELIGION AND WORLDVIEWS COMMUNITY CAN HELP AND SUPPORT YOUR WORK	USEFUL LINKS
ITT	<p><b>For beginner teachers:</b></p> <ul style="list-style-type: none"> <li>• Culham St Gabriel's free self-study courses for primary and secondary.</li> <li>• Bespoke online webinars or face to face training from RE Today Services to support delivery of the core content framework.</li> </ul> <p><b>For mentors:</b></p> <ul style="list-style-type: none"> <li>• Free support materials for ITT mentors.</li> <li>• Support for mentors through The Association of University Lecturers in Religion and Education.</li> </ul>	<p><a href="https://courses.cstg.org.uk">courses.cstg.org.uk</a></p> <p><a href="https://natre.org.uk/courses-events/upcoming-courses-events">natre.org.uk/courses-events/upcoming-courses-events</a></p> <p><a href="https://reonline.org.uk/professional-development/for-initial-teacher-training-providers">reonline.org.uk/professional-development/for-initial-teacher-training-providers</a></p> <p><a href="https://aulre.org">aulre.org</a></p>
CPD	<p><b>All teachers:</b></p> <ul style="list-style-type: none"> <li>• Membership of NATRE</li> <li>• NATRE affiliated local groups</li> <li>• RE Today Primary Curriculum</li> <li>• Culham St Gabriel's scholarships for masters and doctoral study</li> <li>• Farmington Scholarships</li> <li>• #REChatUK (hosted by NATRE on X)</li> <li>• Strictly RE Conference (hosted by NATRE)</li> <li>• RE Hubs, including Learn Teach Lead RE in some areas of the country</li> <li>• Specialist providers such as RE Today Services, local authority RE advisers, Church of England and Roman Catholic Dioceses.</li> </ul> <p><b>Middle and senior leaders:</b></p> <ul style="list-style-type: none"> <li>• Get to know your local SACRE</li> <li>• Receive confidential advice on subject specific issues through NATRE</li> <li>• Culham St Gabriel's Leadership programme</li> <li>• RE Quality Mark programme</li> <li>• RExChange research conference by Culham St Gabriel's</li> <li>• NATRE and AREIAC Joint Network for MAT RE leads, booking through RE Hubs</li> <li>• A career journey CPD overview from RE:ONLINE</li> </ul>	<p><a href="https://natre.org.uk/membership">natre.org.uk/membership</a></p> <p><a href="https://natre.org.uk/about-natre/re-in-your-region">natre.org.uk/about-natre/re-in-your-region</a></p> <p><a href="https://retoday.org.uk/school-support/primary-re-curriculum">retoday.org.uk/school-support/primary-re-curriculum</a></p> <p><a href="https://cstg.org.uk/scholarships">cstg.org.uk/scholarships</a></p> <p><a href="https://farmington.ac.uk/re-teachers">farmington.ac.uk/re-teachers</a></p> <p><a href="https://twitter.com/NATREupdate">twitter.com/NATREupdate</a></p> <p><a href="https://natre.org.uk/courses-events/strictlyRE-2024-CPD-recordings">natre.org.uk/courses-events/strictlyRE-2024-CPD-recordings</a></p> <p><a href="https://re-hubs.uk">re-hubs.uk</a></p> <p><a href="https://ltlre.org">ltlre.org</a></p> <p><a href="https://nasacre.org.uk/database">nasacre.org.uk/database</a></p> <p><a href="https://www.natre.org.uk">www.natre.org.uk</a></p> <p><a href="https://cstg.org.uk/scholarship-programmes/leadership">cstg.org.uk/scholarship-programmes/leadership</a></p> <p><a href="https://reqm.org">reqm.org</a></p> <p><a href="https://reonline.org.uk/research/engaging-with-research/conferences/rexchange-2024">reonline.org.uk/research/engaging-with-research/conferences/rexchange-2024</a></p> <p><a href="https://re-hubs.uk/calendar">re-hubs.uk/calendar</a></p> <p><a href="https://reonline.org.uk/professional-development/be-inspired">reonline.org.uk/professional-development/be-inspired</a></p>

<b>ECT</b>	<p><b>For early career teachers:</b></p> <ul style="list-style-type: none"> <li>NATRE free monthly webinars</li> <li>Culham St Gabriel's free self-study courses for primary and secondary</li> </ul> <p><b>For mentors:</b></p> <ul style="list-style-type: none"> <li>See CPD referenced above</li> </ul>	<p><a href="https://natre.org.uk/membership/early-careers-teachers/ect-free-monthly-webinar">natre.org.uk/membership/early-careers-teachers/ect-free-monthly-webinar</a></p> <p><a href="https://courses.cstg.org.uk">courses.cstg.org.uk</a></p>
<b>Appropriate Body Services</b>	<ul style="list-style-type: none"> <li>Receive newsletters from NATRE, Culham St Gabriel's (RE:ONLINE) and the Religious Education Council of England and Wales to ensure you are up to date with latest national developments in the subject</li> <li>Utilise local networks for support (see above)</li> </ul>	<p><a href="mailto:admin@natre.org.uk">admin@natre.org.uk</a></p> <p><a href="https://reonline.org.uk">reonline.org.uk</a></p> <p><a href="mailto:info@religiouseducationcouncil.org.uk">info@religiouseducationcouncil.org.uk</a></p>
<b>Research Schools within Teaching School Hubs</b>	<ul style="list-style-type: none"> <li>RE:ONLINE by Culham St Gabriel's research library, articles and resources</li> <li>Culham St Gabriel's grant funding for individual and project research</li> <li>Research and data from NATRE</li> <li>TRS-UK website (Theology and Religious Studies)</li> <li>Farmington Scholarships</li> <li>RExChange research conference by Culham St Gabriel's</li> </ul>	<p><a href="https://reonline.org.uk/research">reonline.org.uk/research</a></p> <p><a href="https://cstg.org.uk/funding">cstg.org.uk/funding</a></p> <p><a href="https://natre.org.uk/news/latest-news">natre.org.uk/news/latest-news</a></p> <p><a href="https://trs.ac.uk">trs.ac.uk</a></p> <p><a href="https://farmington.ac.uk/re-teachers/">farmington.ac.uk/re-teachers/</a></p> <p><a href="https://reonline.org.uk/research/engaging-with-research/conferences/rexchange-2024">reonline.org.uk/research/engaging-with-research/conferences/rexchange-2024</a></p>

**AREIAC:** The Association of RE Inspectors, Advisors and Consultants

**AULRE:** The Association of University Lecturers in Religion and Education

**Culham St Gabriel's:** An endowed charitable foundation championing religion and worldviews education. It owns and manages the RE:ONLINE website.

**Farmington Institute:** Offers scholarships to teachers and educational leaders researching religion and worldviews education and related fields

**NATRE:** The National Association of Teachers of RE

**RE Council of England and Wales:** A membership organisation which provides a forum where those with an interest in supporting and promoting religious education and RVE in schools and colleges can share matters of common concern.

**RE Hubs:** A neutral platform which brings all stakeholders together, filling the knowledge gap and equipping everyone within the RE/RVE/R&W ecosystem.

**SACRE:** Standing Advisory Council on RE (each local authority must have this statutory body)

**TRS- UK:** The professional association for departments, units and subject associations of the study of religion and theology in the UK

This briefing paper has been produced jointly by: The National Association of Teachers of RE, The Religious Education Council of England and Wales and RE Today Services. Their work is supported by Culham St Gabriel's Trust.